

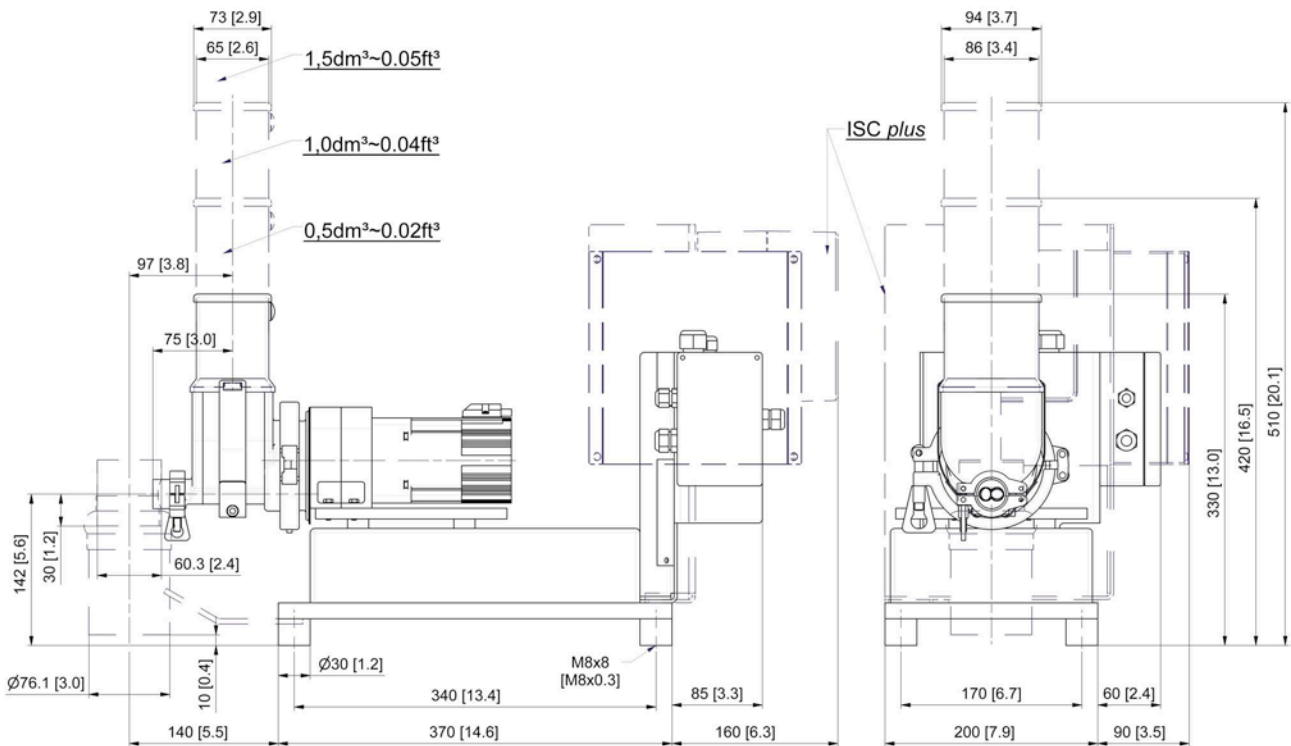
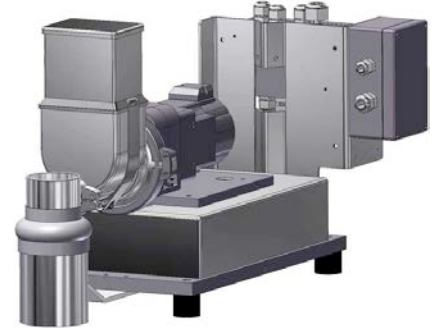
Brabender Loss-in-Weight Feeder DDW-MD0-MT-0.5(1.0)[1.5]

The Brabender DDW-MD0-MT-0.5(1.0)[1.5] loss-in-weight feeder from the "Brabender Lab Line", the gravimetric version of the Brabender MiniTwin feeder MT, is capable of reliably metering powders with temperatures from 0 to 45°C (32-113°F) at rates of a few grams per hour.

The feeder has the following main components: a free-standing mounting base/scale with a digital load cell ("DigiMASS-2"), a Brabender MiniTwin feeder MT (miniature twin screw feeder with a multifunctional stirring agitator and a brushless DC motor with an integrated speed controller) and an extension hopper for ingredient storage. The DigiMASS-2 load cell has the following features: a theoretical resolution of 4,000,000:1, twin vibrating wire technology which compensates for temperature change and external vibration, filtering software, and a serial interface ensuring high-speed data communication. The MiniTwin feeder provides reliable flow of ingredient and consistent

screw filling since the stirring agitator mixes the ingredient, prevents bridging and promotes ingredient flow into the screw. Extension hoppers are available with 0.5 dm³ (0.02 ft³), 1.0 dm³ (0.04 ft³) or 1.5 dm³ (0.051 ft³) volume, depending on the ingredient and feed rate.

All components are fully mounted and wired to junction boxes. For proper function the feeder must be protected against vibration and air currents. Optional mass plate mounted versions or designs with air currents protections are available. Further options include versions with onboard control electronics ("ISC plus") and exchange twin screws. Ingredient contact steel parts are made of stainless steel. Mild steel parts are painted light grey (RAL 7035). Environmental conditions: 0-45°C (32-113°F), up to 85% humidity without condensation. The feeder conforms to CE directives.



Weight with 0.5 dm³/0.02 ft³ extension hopper approx. 20.0 kg (44.1 lb)

Weight with 1.0 dm³/0.04 ft³ extension hopper approx. 20.5 kg (45.2 lb)

Weight with 1.5 dm³/0.05 ft³ extension hopper approx. 21.0 kg (46.3 lb)

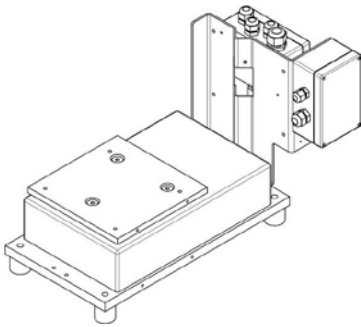
Dimensions in mm (in)

Technical Data

Available screw sizes and feed rates

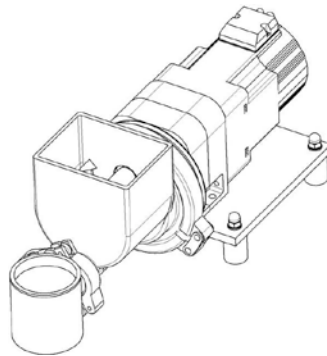
Screw Type	Ø (mm) x p (mm)	Tube designation	Tube dia. (mm)	Speed (rpm)	Max. feed rate (dm ³ /hr)*	Max. feed rate (ft ³ /hr)*
Twin Concave Screw (TC)	TC 12/04 TC 12/12	130 T 130 T	16.0 x 1.5 16.0 x 1.5	max. 140 max. 140	1.26 5.60	0.04 0.20

* Theoretical values at 100% screw filling level and motor speed. Depending on the flow characteristics the screw filling level may decrease to 50%. In addition, max. speed should be reduced to allow for bulk density variations.



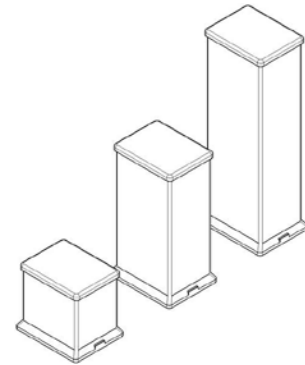
Mounting Base / Scale MD0

- Free-standing mounting base with vibration isolation feet and junction boxes
- Digital load cell DigiMASS-2 (2 vibrating wires)
- Approx. net weighing ranges:
 - 3 kg/6.6 lb (0.5 dm³/0.02 ft³ extension hopper)
 - 2.5 kg/5.5 lb (1.0 dm³/0.04 ft³ extension hopper)
 - 2 kg/4.4 lb (1.5 dm³/0.05 ft³ extension hopper)



MiniTwin Feeder

- Laboratory sized twin screw feeder
- Stainless steel housing
- Exchangeable twin screw
- Brushless DC motor (0.05 kW, 230 V, IP65, with integrated speed controller, screw speed max. 140 min⁻¹)
- Stirring agitator in the screw trough (driven from screw drive via integral gearbox)
- Ingredient contact surfaces are stainless steel
 - Screw trough SS 1.4404 (316 L)
 - Stirring agitator SS 1.4301 (304)
 - Screws SS 1.4305 (303)



Extension Hoppers

- Extension hoppers
 - 0.5 dm³ (0.02 ft³), straight walled
 - 1.0 dm³ (0.04 ft³), straight walled
 - 1.5 dm³ (0.05 ft³), straight walled
- Lift off cover
- Stainless steel SS 1.4404 (316 L)

Accessories

- Flexible connections
- Exchange twin screws
- Mass plate with isolators for additional vibration isolation, mild steel painted light grey as per RAL 7035 (for dimensions see separate drawing)
- Air currents protection (transparent polycarbonate) for wind isolation (for dimensions see separate drawing)

Options

- Version without discharge connection pipe
- Screw tube without vertical outlet
- Designs for higher or lower ingredient and/or ambient temperatures (standard = 0-45°C ≈ 32-113°F each)

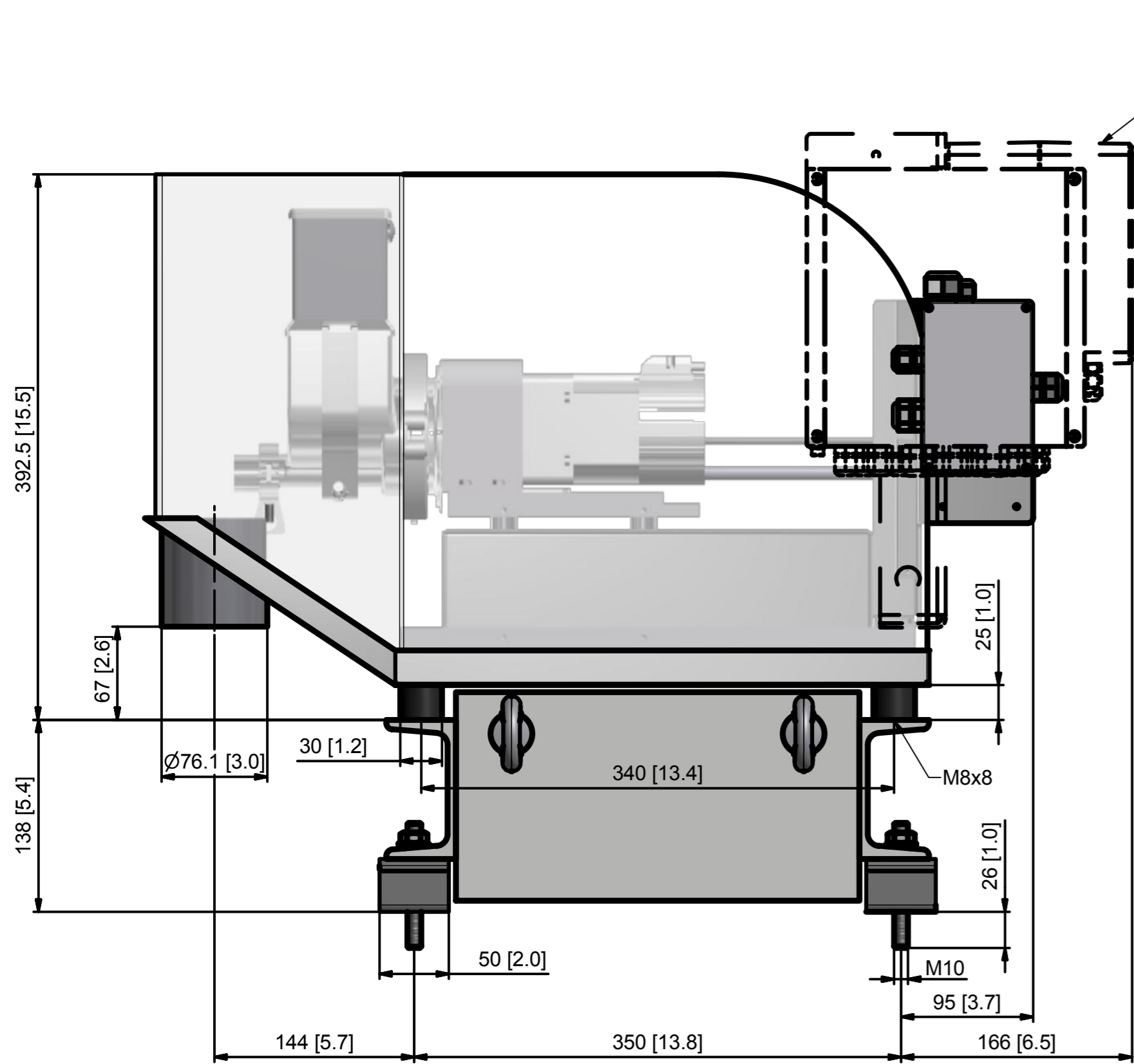
Controls

Feeder control modules are offered either mounted on the feeder or for mounting in a separate panel. Controls can communicate directly to most host/PLC systems or to Brabender Congrav® Operator Interfaces (see Congrav® Works Standards)

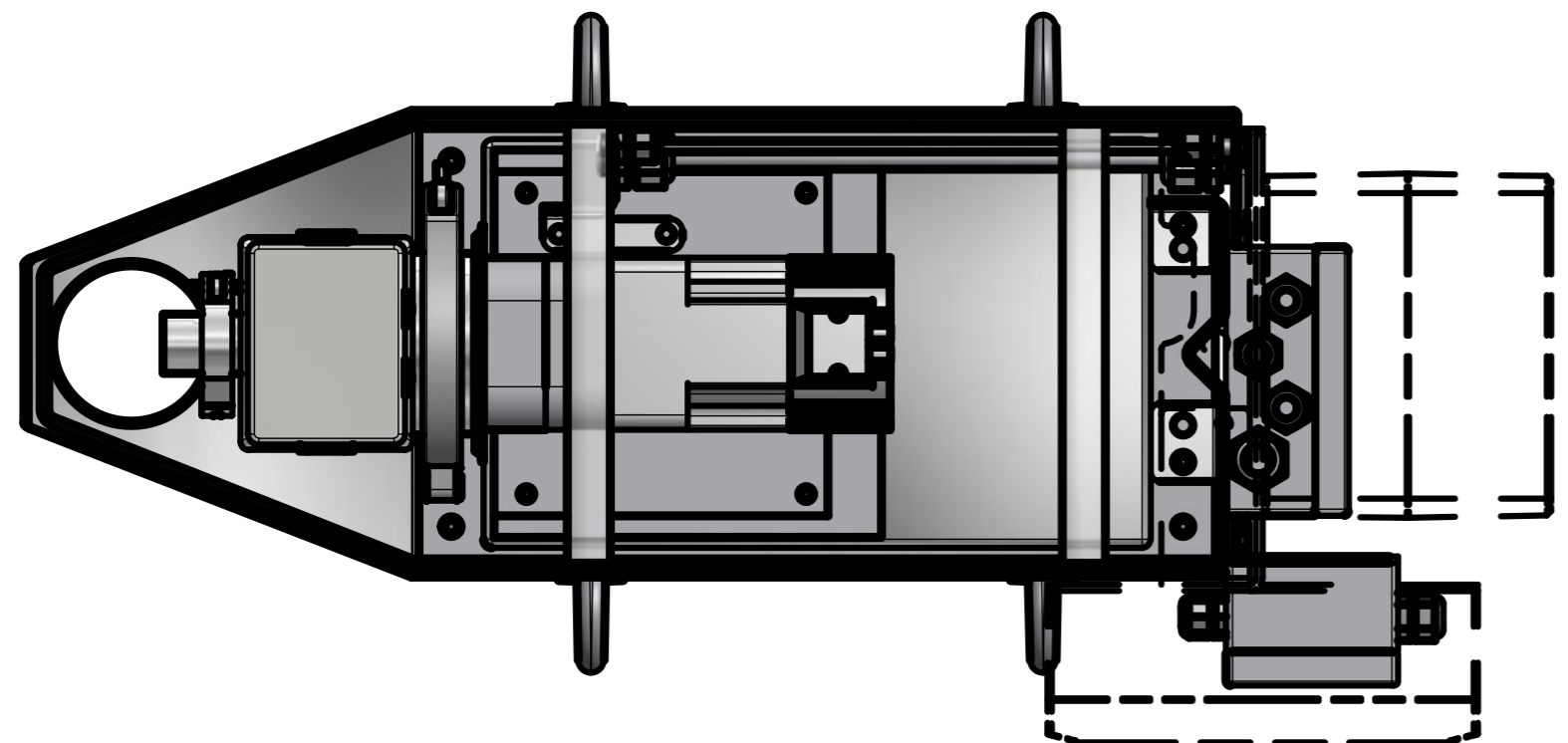
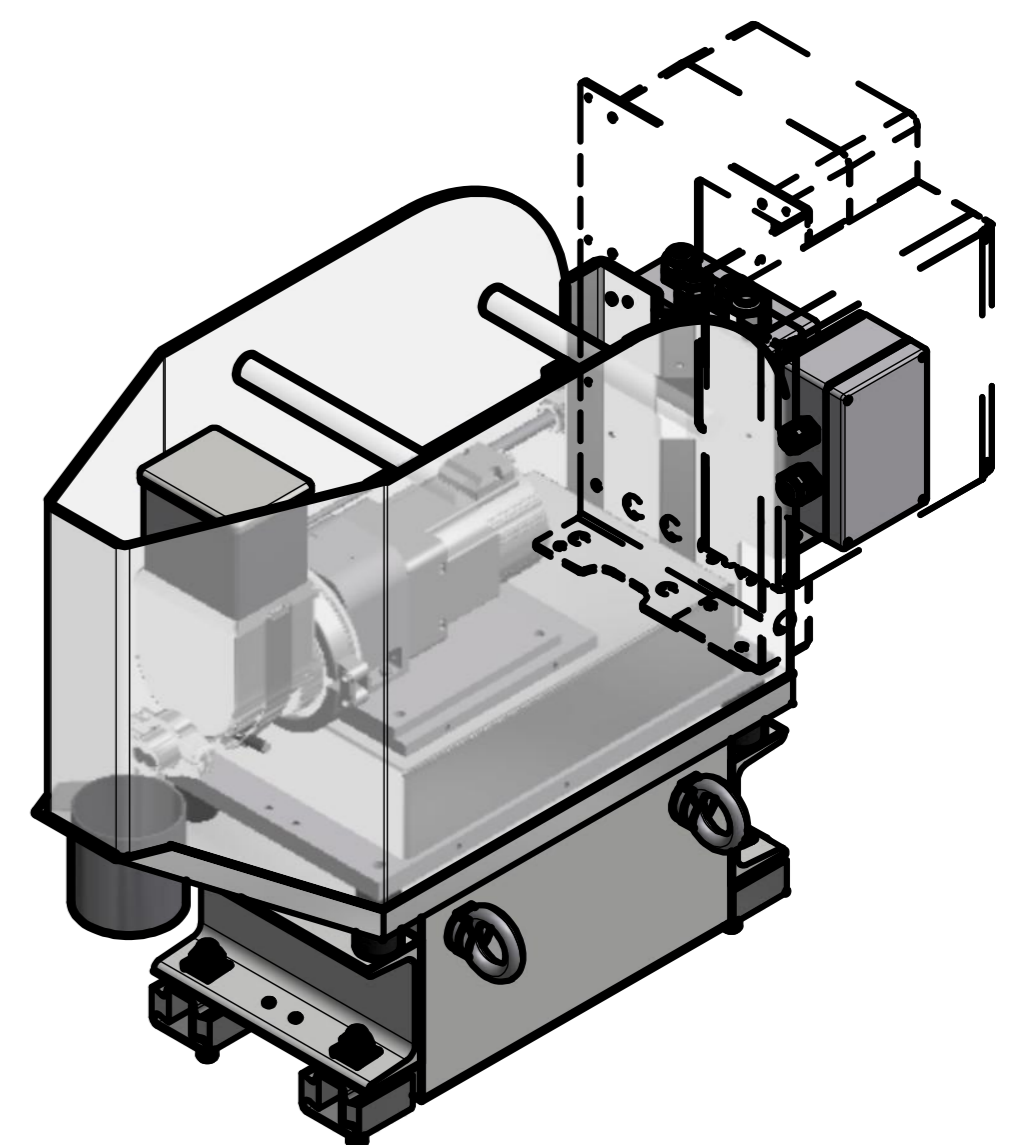
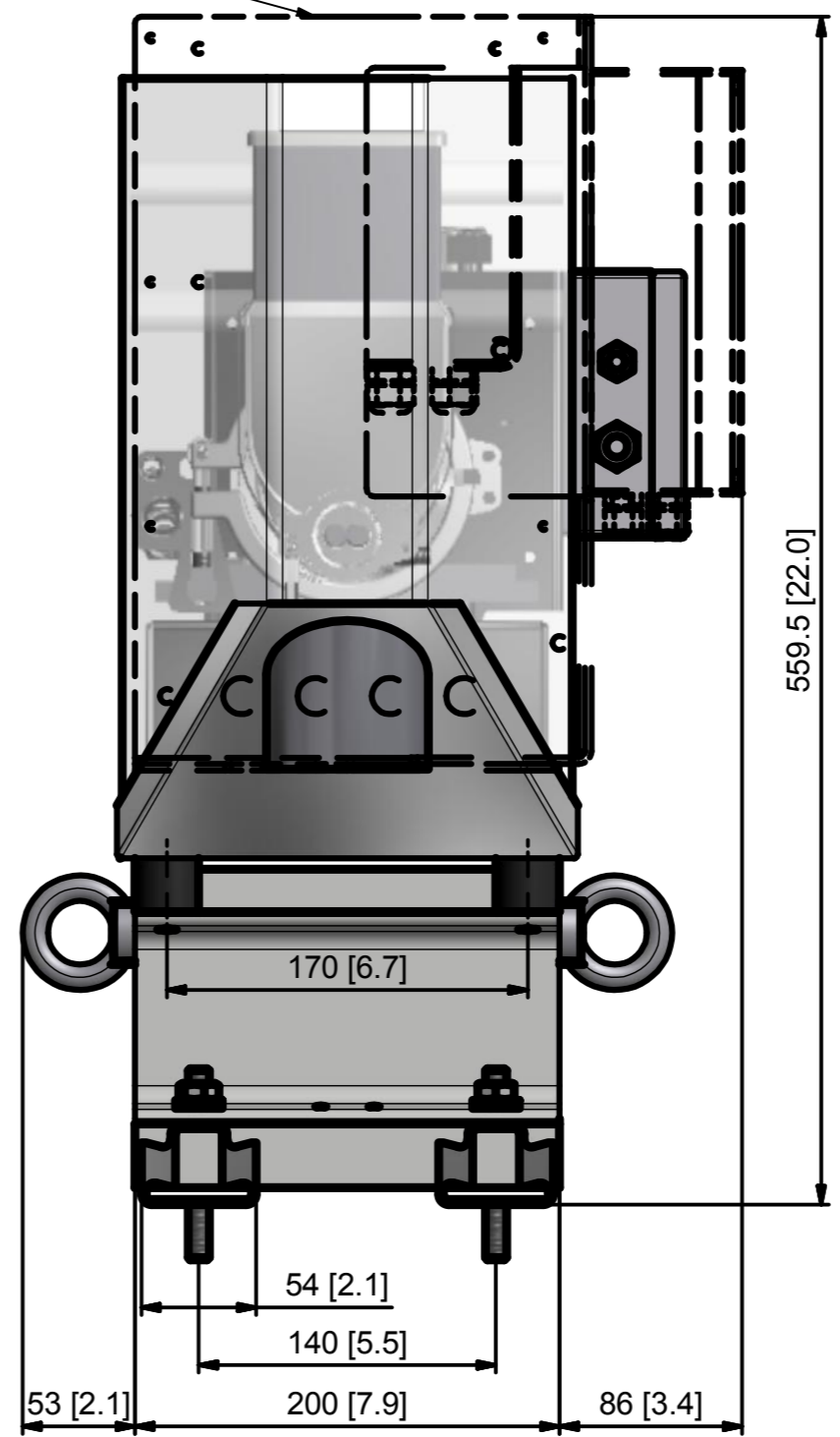


Modifications reserved. All data describe our products in a general manner. They are no agreement on or warranty of characteristics in the sense of § 434 or guarantee in the sense of § 443 of the German Civil Code or similar regulations and effect no liability.

Issue 4.0 (April 16)
Supersedes 4.0 (April 13)



(ISC plus)



() = Option

Mass plate: 72 kg (158.7 lb)
Air currents protection: 5 kg (11.0 lb)

Für diese Zeichnung behalten wir uns alle Rechte vor (Urheberschutz DIN 34)										
8										
7										
6										
5										
4										
3										
2										
1										
Ind.	Anderungen	Datum	Name	Status	Check / Geprüft	16.04.2013	M. Hess			
Scale / Maßstab:	Description / Benennung									Drawing-No. / Zeichnungs.Nr.:
1:5	Option: Windschutz und Masseplatte									87.609-2-0
	Option: air currents protection and mass plate									