



# FlexWall® Plus

## FW80/6

Volumetric and gravimetric



### General Information

The FlexWall® Plus [FW80/6](#) feeder is ideal for free flowing bulk ingredients. The feeder has the following main components: a stainless steel trapezoidal housing, flexible polyurethane trough with a large cross-section, a screw, a screw tube, 3 phase motor and a trapezoidal extension hopper with volumes of 100 dm<sup>3</sup> (3.53 cuft) or 200 dm<sup>3</sup> (7.06 cuft).

The shape of the trough provides a consistent screw filling and mass flow without ingredient deterioration.

Screw removal of the FW80/6 is from the front only.

The FlexWall® Plus is easily disassembled for wet or dry cleaning as the polyurethane hopper that is attached to the housing is easily removed. Moreover, the [compact trapezoidal shape](#) allows up to 6 feeders to be arranged around a central feed point. Service can be from the front or back.

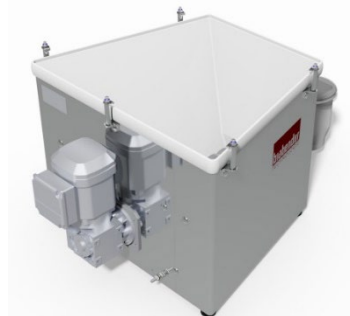
The gravimetric version includes the analog weighing system [MS6](#), or the digital weighing system [MD6](#) (for highest measurement accuracy), featuring a high resolution robust digital load cell with serial data transmission and advanced filtering technology.

The unit conforms to CE directives.



### Model Specification

Screw drive	fixed
Drive power	0.37 kW (0.5 HP)
Screw speed	198 min <sup>-1</sup>
Screw speed optional	346 min <sup>-1</sup>
Massage paddles	no



### Control modules

Control and speed modules are offered either mounted onto the feeder ([Congrav® CM-E](#)) or are available for mounting in a separate control panel ([Congrav® CB-E](#) or [Congrav® CB-S](#)).

Controls can communicate directly to most host/ PLC systems or to Brabender Technologie Congrav® Operator Interfaces.

### Technical Drawings and Dimensions

	volumetric feeders	gravimetric feeder	
		Control module CB	Control module CM
100 dm <sup>3</sup> (3.5 cuft) hopper	<a href="#">FW80/6-100</a>	<a href="#">DDW-M6-FW80/6-100</a>	<a href="#">DDW-M6-FW80/6-100 CM</a>
200 dm <sup>3</sup> (7 cuft) hopper	<a href="#">FW80/6-200</a>	<a href="#">DDW-M6-FW80/6-200</a>	<a href="#">DDW-M6-FW80/6-200 CM</a>



# FlexWall® Plus

## FW80/6



Volumetric and gravimetric

### Available Screw Sizes and Feed Rates

Screw type	Designation Ø / p [mm]	Tube designation	Tube dia. [mm]	Max. speed [min <sup>-1</sup> ]	Max. feed rate * [dm <sup>3</sup> /h]	Max. feed rate* [cuft/hr]
<a href="#">Spiral screw (S)</a>	S 43/27	443	48.3x2.0	198 (346) / 100Hz	380 (663)	13.4 (23.4)
	S 43/42	443	48.3x2.0	198 (346) / 100Hz	635 (1110)	22.4 (39.2)
	S 52/39	563	60.3x2.0	198 (346) / 100Hz	821 (1433)	29 (50.6)
	S 52/62	563	60.3x2.0	198 (346) / 100Hz	1391 (2431)	49.1 (85.9)
	S 67/45	715	76.1x2.3	198 (346) / 100Hz	1665 (2911)	58.8 (102.8)
	S 67/71	715	76.1x2.3	198 (346) / 100Hz	2745 (4796)	96.9 (169.4)
	S 79/45	843	88.9x2.3	198 (346) / 100Hz	2357 (4120)	83.2 (145.5)
	S 79/82	843	88.9x2.3	198 (346) / 100Hz	4499 (7863)	158.9 (277.7)
<a href="#">Spiral screw (S) for granules</a>	S 43/27	563	60.3x2.0	198 (346) / 100Hz	521 (910)	18.4 (32.1)
	S 43/42	563	60.3x2.0	198 (346) / 100Hz	863 (1509)	30.5 (53.3)
	S 52/39	715	76.1x2.3	198 (346) / 100Hz	1191 (2081)	42.1 (73.5)
	S 52/62	715	76.1x2.3	198 (346) / 100Hz	2003 (3499)	70.7 (123.6)
	S 67/45	843	88.9x2.3	198 (346) / 100Hz	2155 (3766)	76.1 (133)
	S 67/71	843	88.9x2.3	198 (346) / 100Hz	3537 (6180)	124.9 (218.3)
<a href="#">Blade Screw (B) Stainless Steel</a>	B 40/32	443	48.3x2.0	198 (346) / 100Hz	311 (543)	11 (19.2)
	B 40/46	443	48.3x2.0	198 (346) / 100Hz	465 (813)	16.4 (28.7)
<a href="#">Blade Screw (B) Polyurethan</a>	B 50/45 **	563	60.3x2.0	198 (346) / 100Hz	797 (1393)	28.1 (49.2)
	B 50/70 **	563	60.3x2.0	198 (346) / 100Hz	1279 (2234)	45.2 (78.9)
	B 79/50 **	843	88.9x2.3	198 (346) / 100Hz	2280 (3985)	80.5 (140.7)
	B 79/88 **	843	88.9x2.3	198 (346) / 100Hz	4193 (7328)	148.1 (258.8)

\* Theoretical values at 100% screw filling level and motor speed. Depending on the flow characteristics the screw filling level may decrease to 50%. Further limitations must be considered for gravimetric feeding, as max. speed should be reduced to allow for bulk density variations.

\*\*alternatively also available as stainless steel version

[How to read the table of screws](#)

### Technical specification

Ambient temperature:	0°C to +45°C (32°F to 113°F)	* Available options: Conductive or chemically resistant FDA approval polyurethane
Humidity of the air:	up to 85% without condensation	
max. vacuum/pressure:	3 hPa (3 mbar) (1.2 inches of water)	
Product temperature:	0°C to +50°C (32°F to 122°F)	
max. bulk density (volumetric):	1.5 kg/dm <sup>3</sup> * (94 lb/cuft)	
Max. bulk density (gravimetric):	1.5 kg/dm <sup>3</sup> (94 lb/cuft) with hopper 100dm <sup>3</sup> (3.53 cuft) 1.0 kg/dm <sup>3</sup> (64 lb/cuft) with hopper 200 dm <sup>3</sup> (7.06 cuft)	
Flexible screw trough:	polyurethane, food-proof acc. to LMBG*	
Housing, extension hopper, hopper lid:	1.4301 (304 SS)	
Screws, screw tubes, outlets:	1.4571 (316 SS), 1.4301 (304 SS) or polyurethane, food-proof acc. to LMBG*	
Non-contact components:	Aluminium, plated or painted steel (RAL 7035)	
100 or 200 dm <sup>3</sup> extension hopper	Hopper lid for <a href="#">automatic refilling</a> with vent pipe or <a href="#">manual refilling</a>	** 3 phase motors are designed for a power supply of: 230/400 V, 50 (60) Hz, and for the operation in TT networks, TN networks or networks with earthed neutral conductor. For different networks adaptation measures are necessary.
Screw drive:	0.37 kW (0.5 HP), IP65; ISO class F; TEFC; frequency-controlled	
Power supply:	AC 230/400 V (110VAC/460VAC) - 50Hz** or 266/460 V (230/460VAC) - 60Hz	
Net weighing range MD6:	238 kg (524.7 lb) with hopper 100 dm <sup>3</sup> (3.53 cuft) 226 kg (498.2 lb) with hopper 200 dm <sup>3</sup> (7.06 cuft)	
Net weighing range MS6:	208 kg (458.5 lb) with hopper 100 dm <sup>3</sup> (3.53 cuft) 196 kg (432.1 lb) with hopper 200 dm <sup>3</sup> (7.06 cuft)	

### Options and Accessories

- Flexible [inlet and vent connections](#)
- Flexible [outlet connections](#)
- Interchangeable screws and screw tubes
- [BagDumper](#) (for manual refilling)
- [DESTACO clamp fasteners](#) with and without safety switch
- Versions for higher and lower temperatures than standard
- [Explosion-proof versions](#) as per directive 2014/34/EU (ATEX) or NFPA
- FlexWall®Plus with [Hygienic Design \(HD\)](#) as per directive 1935/2004 or FDA
- Screw extension 300 mm (11.81 inches) (not for blade and fiber screws)
- Vertical outlet with [quick release](#)
- [Maintenance disconnect box](#)
- [Filter bag](#) or [JetFilter](#) for vent pipe
- [Turntable](#) or [cart mounting](#)
- Pressure [compensation for the outlet](#), and/or [feeder hopper](#)
- Cleaning and refill systems upon request