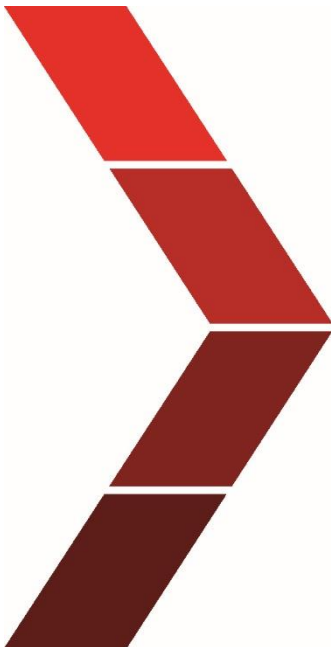


# TECHNICAL INSTRUCTION

## Maintenance - Scale



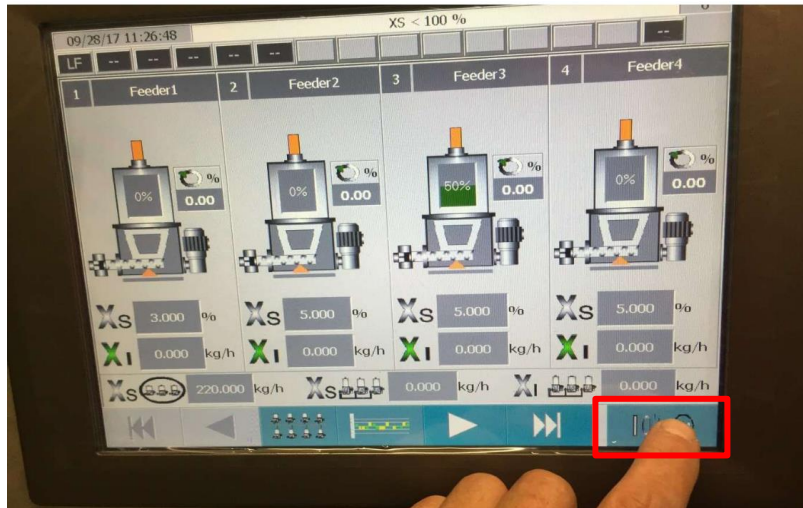
### Description

---

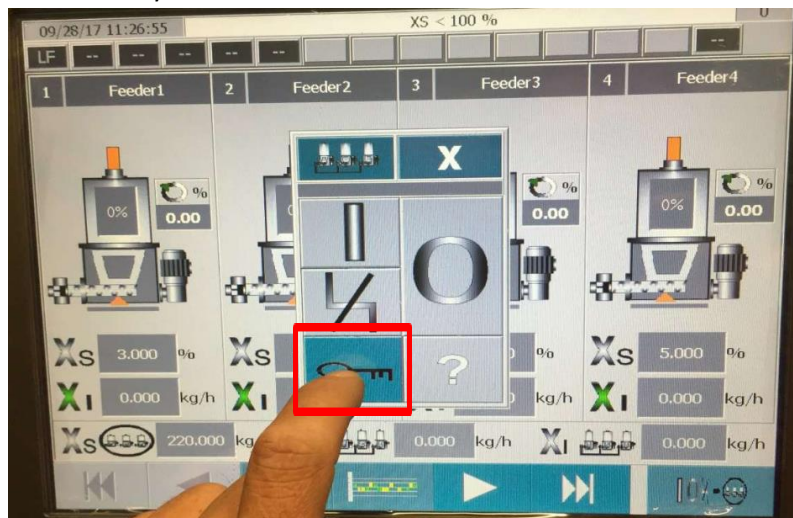
The technical instruction describes the step by step process to conduct the maintenance of the scale of our devices.

---

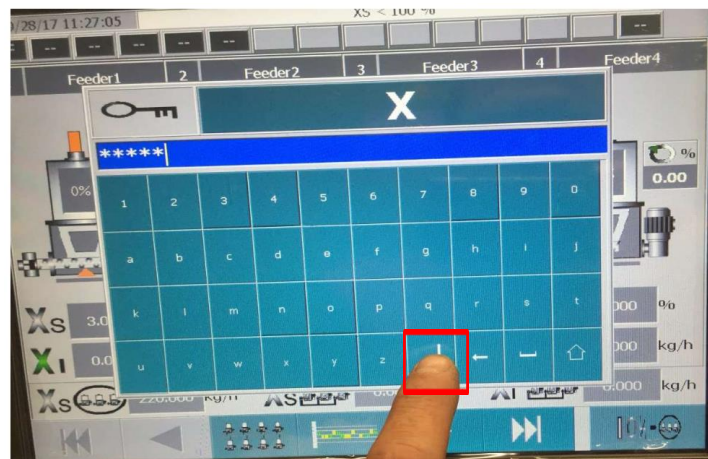
Step 1 Press the button on the bottom right



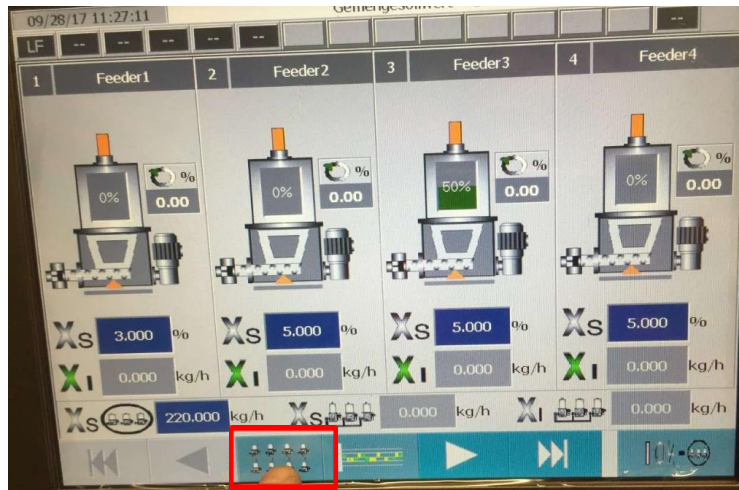
Step 2 Press the key button



Step 3 Enter code **08434** and press Enter button



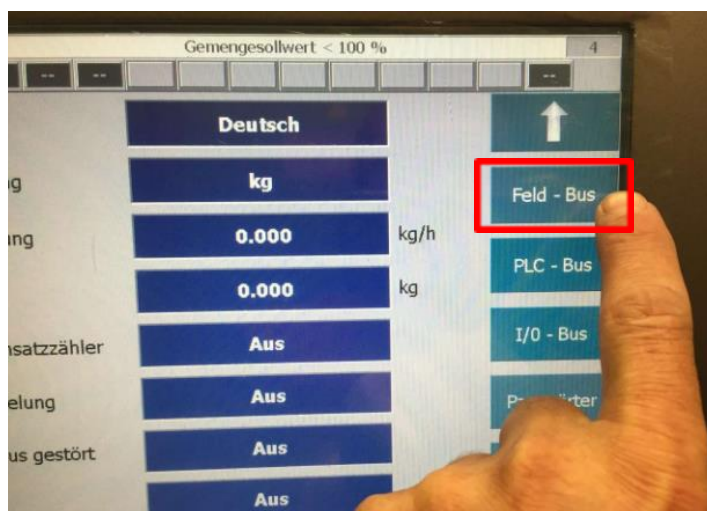
**Step 4** Press plant configuration button



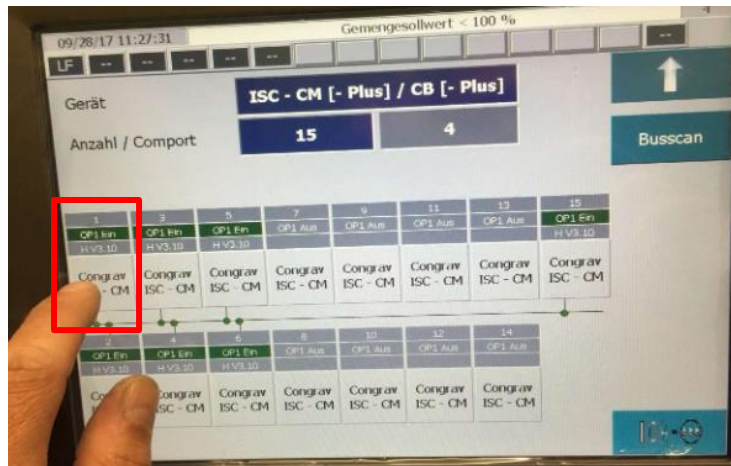
**Step 5** Press service level for plant configuration



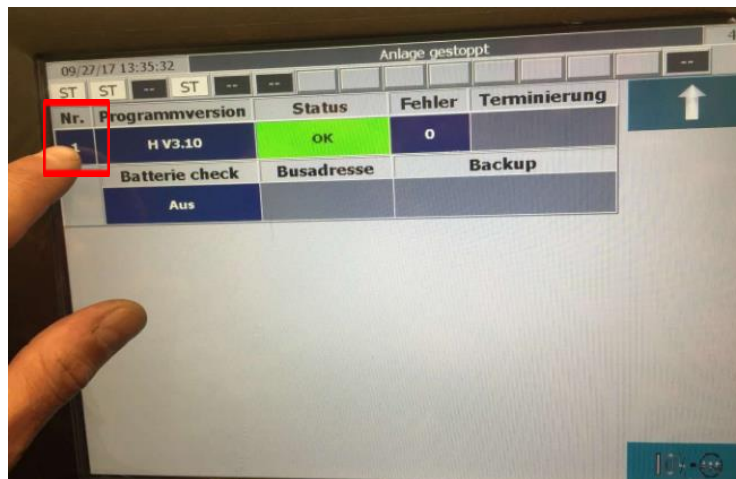
**Step 6** Press Feld-Bus button



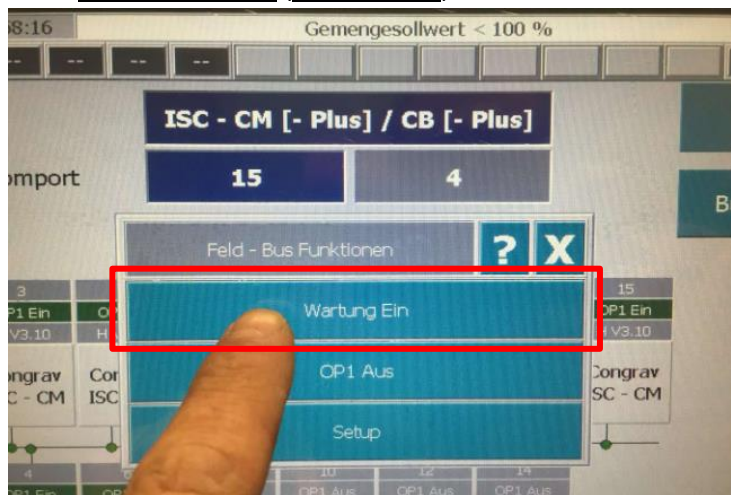
Step 7 Choose component, e.g. 1



Step 8 Press the number on the left



Step 9 Press Maintenance On (Wartung ein)

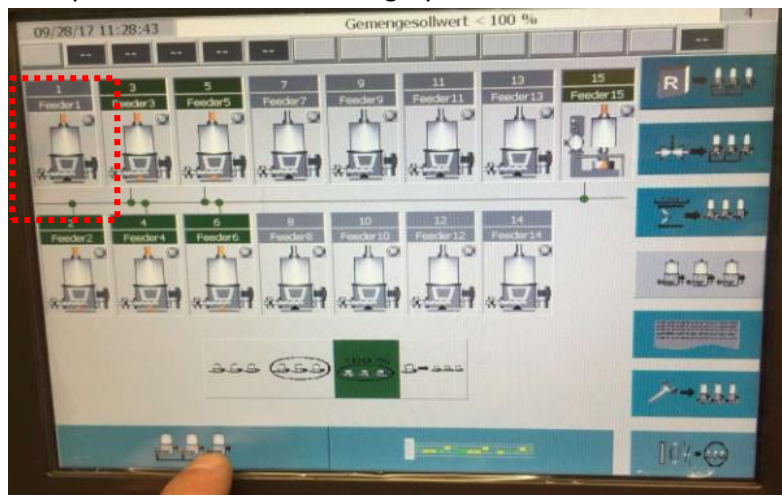




Step 10 Press the arrow pointing to the top to go back



Step 11 Now you can see that scale 1 is gray and has no connection to the fieldbus anymore



**Important!**

**If a scale is disconnected from the fieldbus, maintenance must be activated beforehand. Otherwise there will be a malfunction in the fieldbus communication!**