

TECHNICAL INSTRUCTION

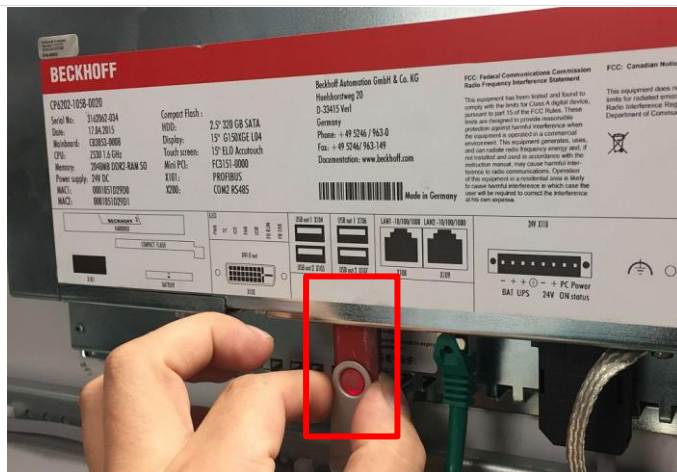
Software update – OP15



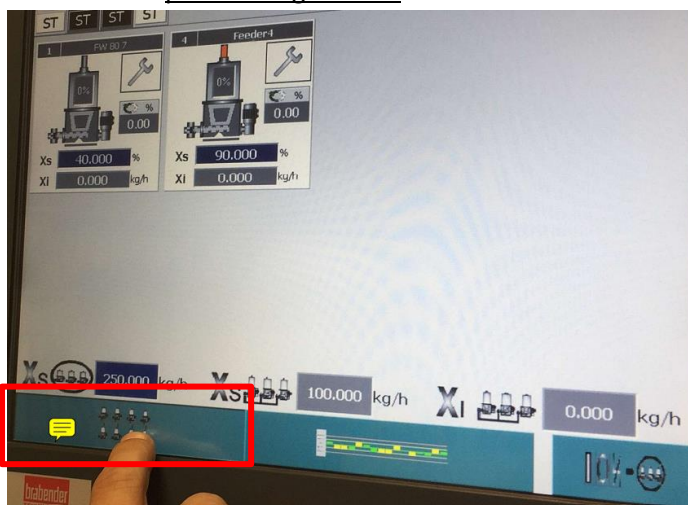
Description

The technical instruction describes the step-by-step process to install the software update of the OP15.

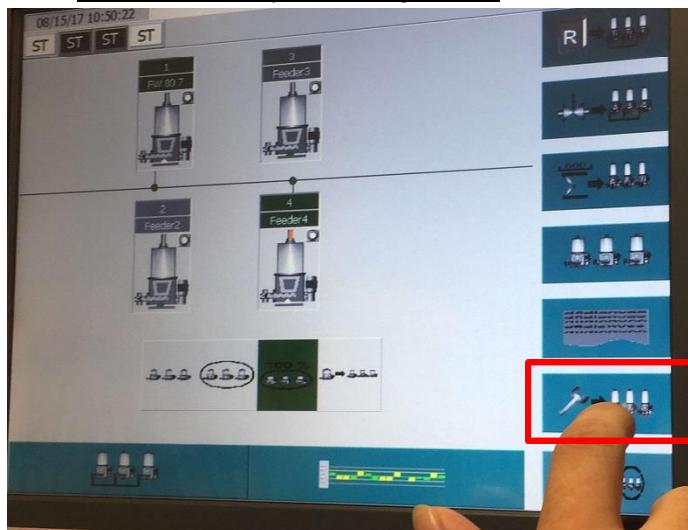
Step 1



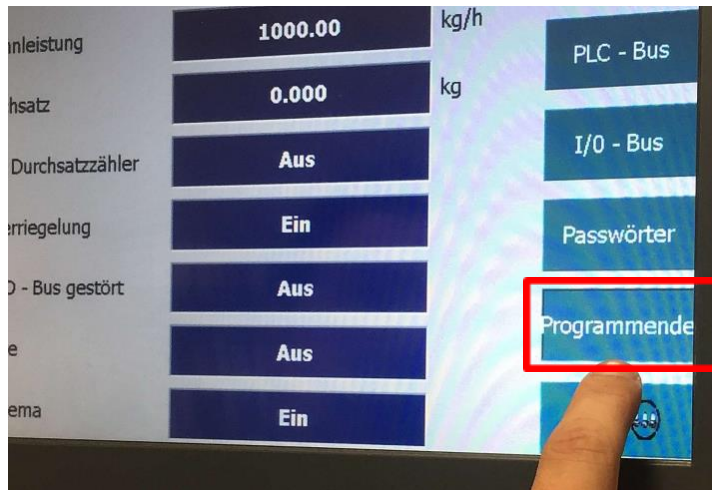
Step 2 Press Button plant configuration drücken



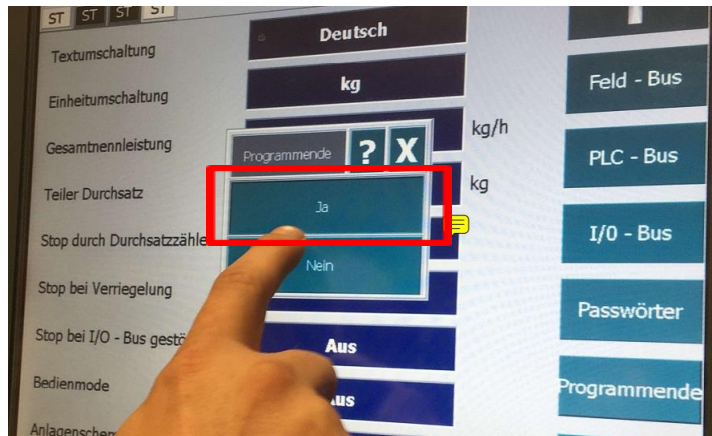
Step 3 Press service level for plant configuration



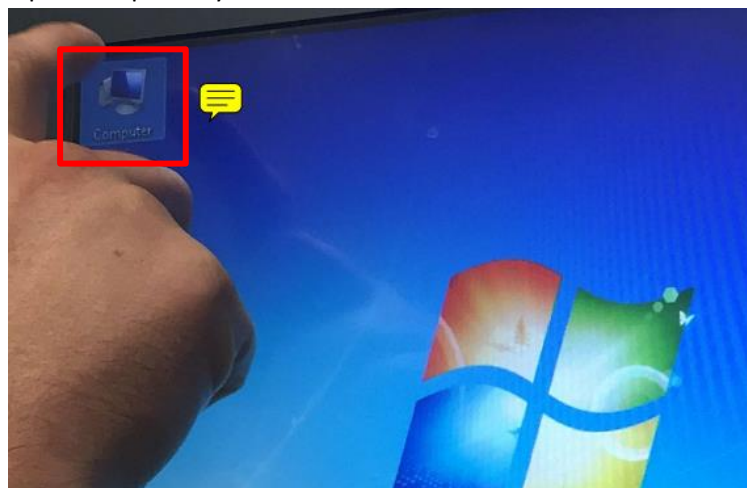
Step 4 Press End program



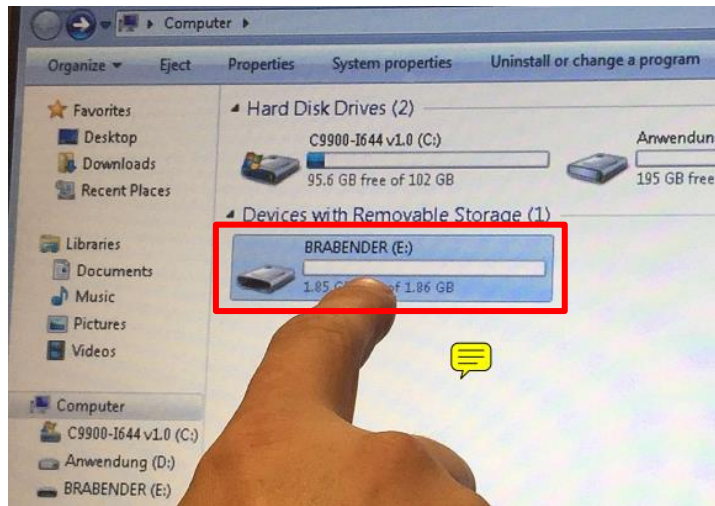
Step 5 Confirm End program with Yes



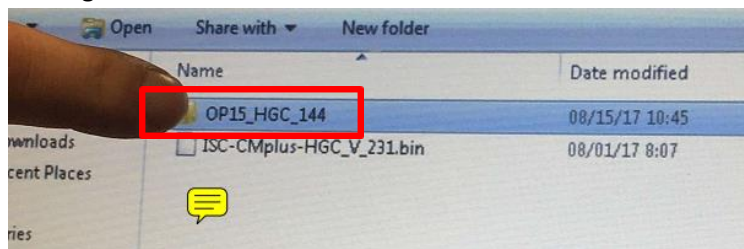
Step 6 Open computer symbol with double click



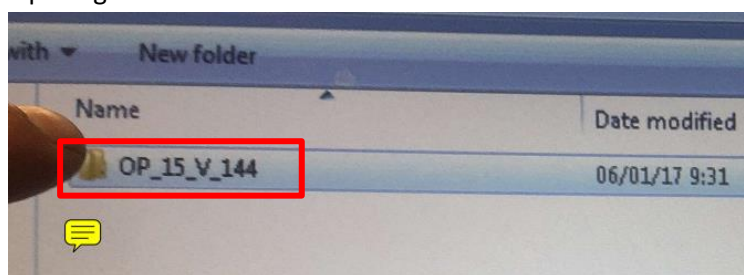
Step 7 Open Removable Storage with double click



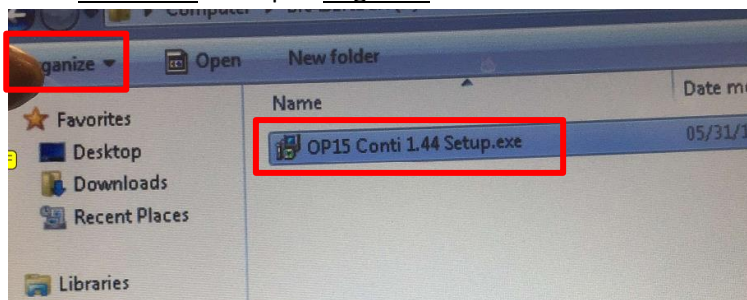
Step 8 Open the software version for the OP15 previously copied to the USB stick by double-clicking on it.



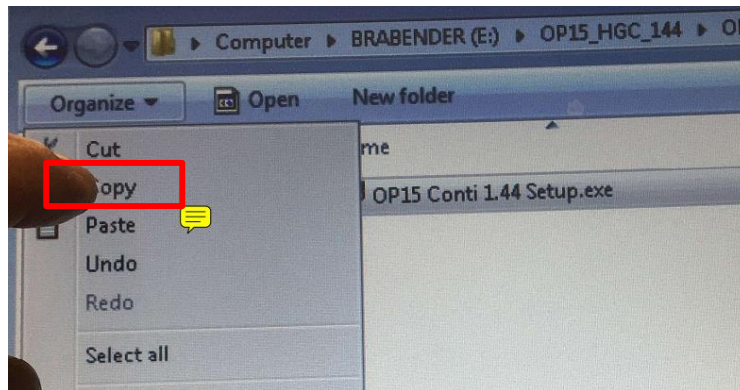
Open again with double click



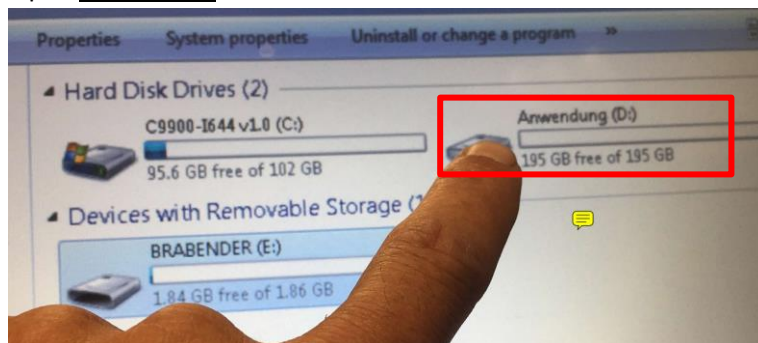
Step 9 Mark OP15 .exe and open Organize



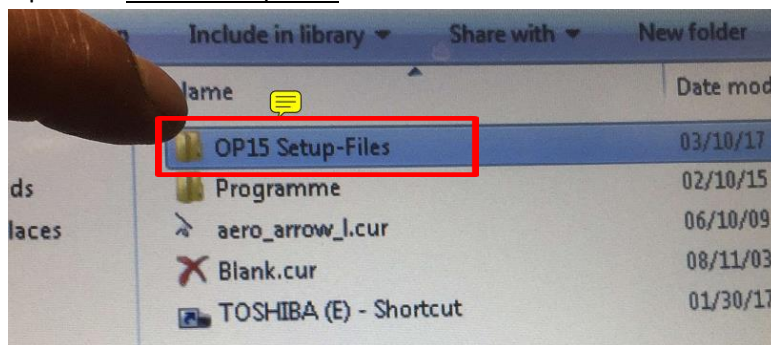
Step 10 Press Copy



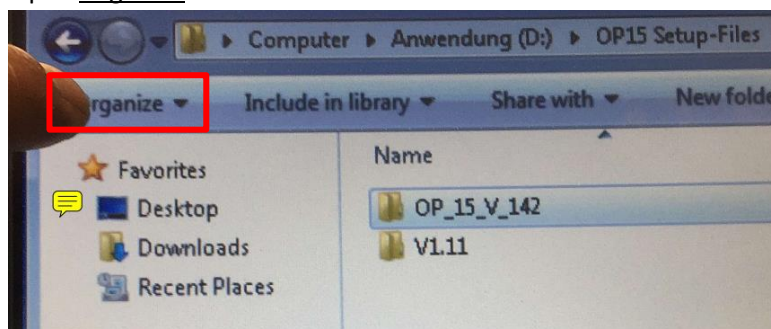
Step 11 Open Application



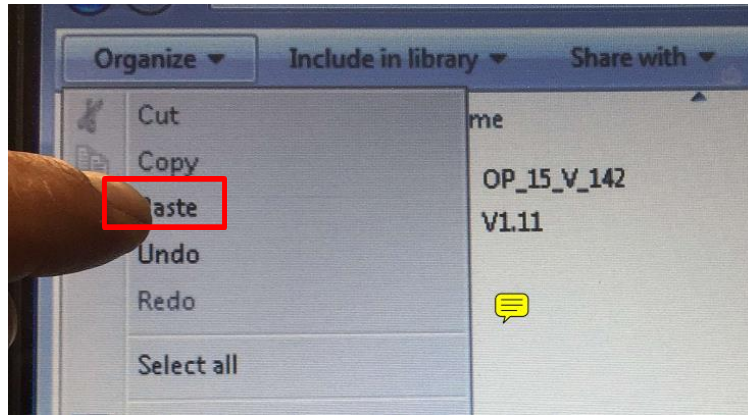
Step 12 Open the OP15 Set-Up Files



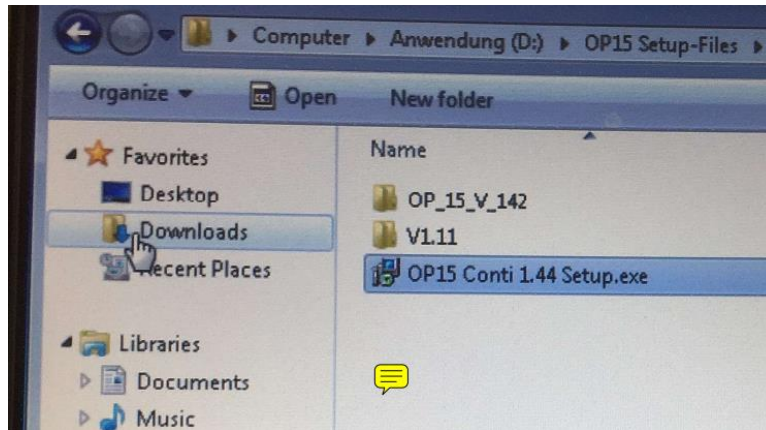
Step 13 Open Organize



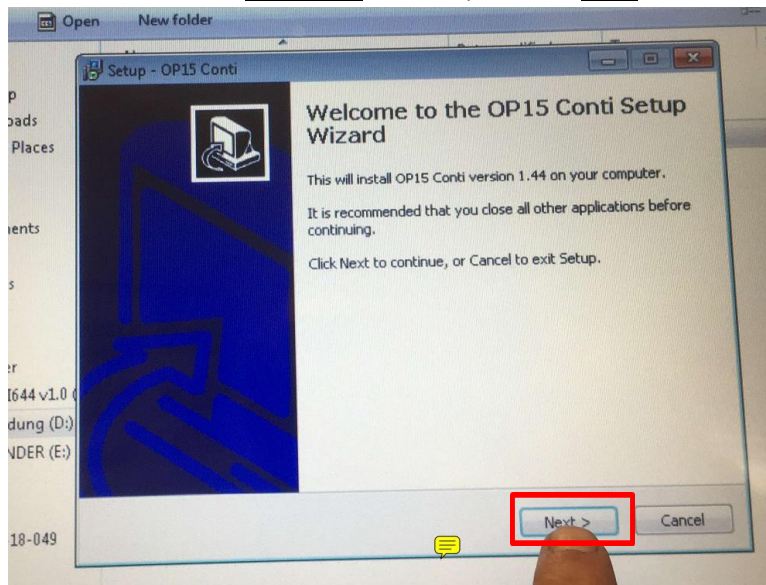
Step 14 Click on Paste to add



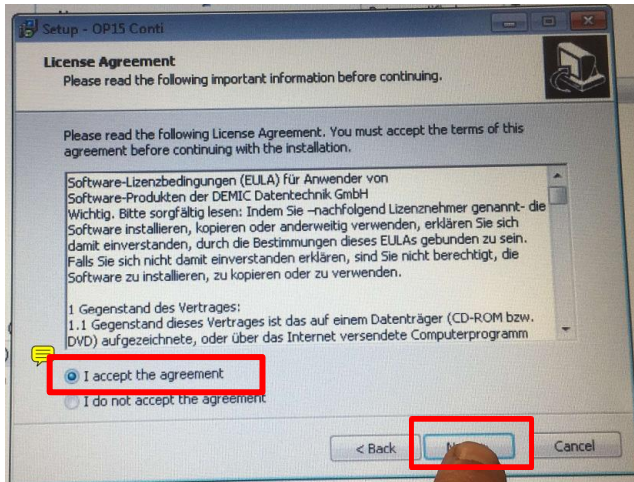
Step 15 Now OP15 Conti 1.44 Setup.exe is inserted into the folder OP15 Setup-Files



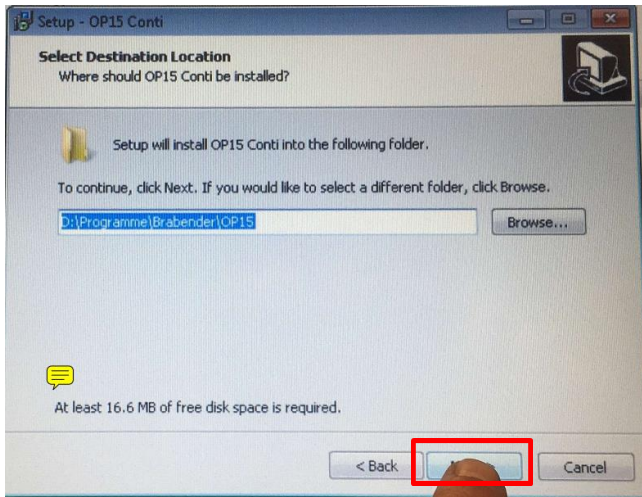
Step 16 Double-click on the Setup.exe file and press the Next



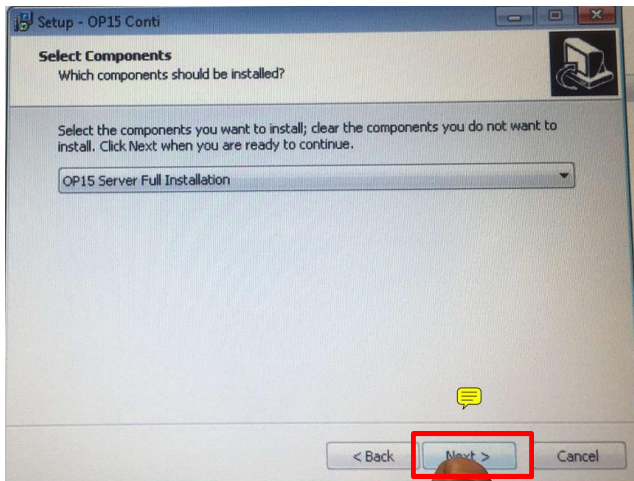
Step 17 Mark I accept the agreement and press Next



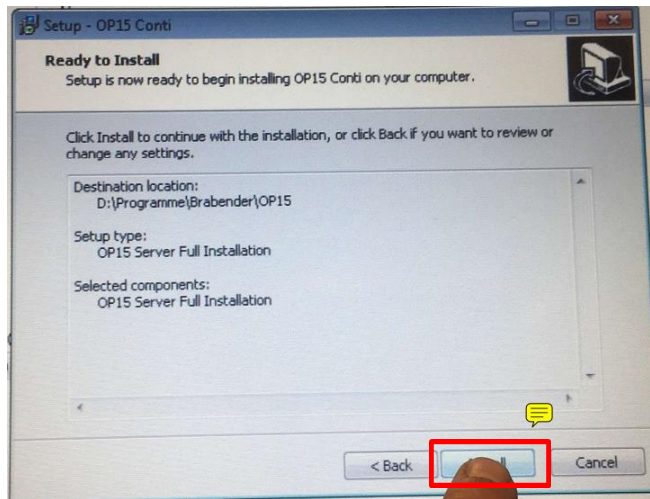
Step 18 Press Next



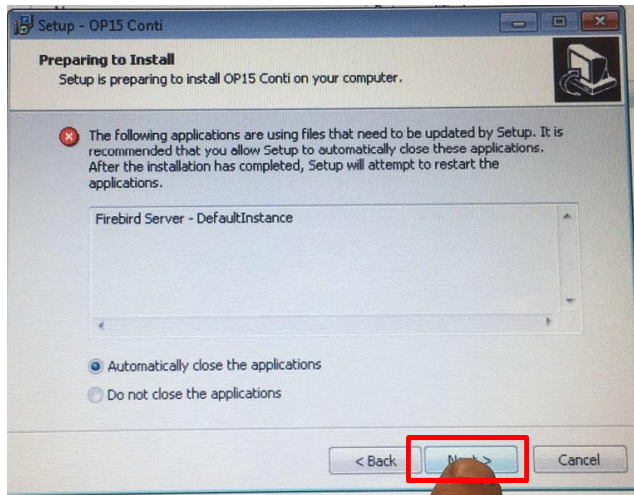
Step 19 Press Next



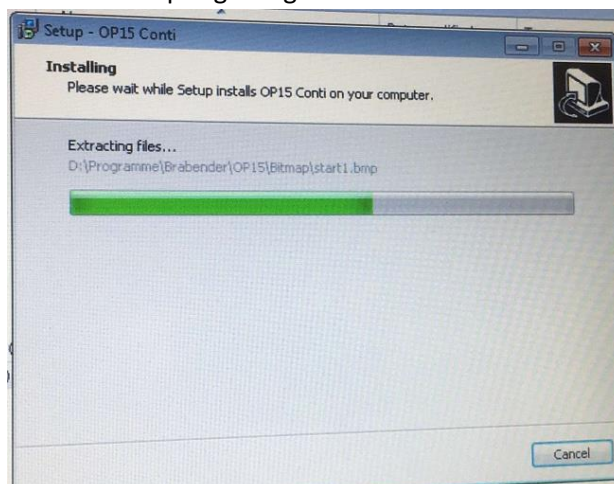
Step 20 Press Install



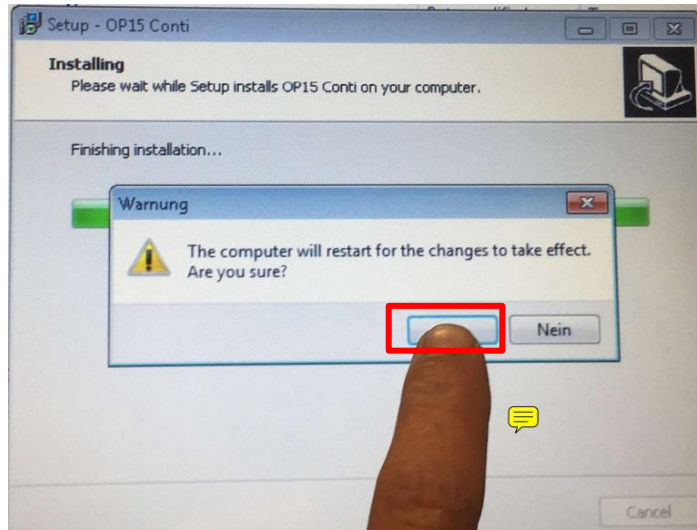
Step 21 Press Next



Step 22 Now the setup is getting installed



Step 23 Restart the computer - Press Yes



Step 24 The system will now shut down and restart

